



# Chosen Hill School

## Welcome

Year 7 Parents Information  
Evening

4th September, 2024

The Virtual School  
Best practice award 2024



# School Vision and Ethos



W ELLNESS  
A MBITION  
T OGETHERNESS  
C ONFIDENCE  
H ONESTY



# Working Together - The Home School Agreement

- The ethos of the school.
- The importance of, and responsibility for, regular and punctual attendance.
- The importance of, and responsibility for, good discipline and behaviour.
- What is expected from schools, parents and pupils in relation to homework.
- The information schools and parents will give one another.

# Senior Team 2024 -25



# Senior Progress Coordinators



# Year 7 Learning Mentor Team



# Extended Team



**7CC- Mr M Reed (MR)**



**7CM- Miss L Woodman (LWD)**



**7CS- Mrs D Forster (DF) Mrs J Durrant (JDU)**



**7CW- Mrs C Jefferies (CJF) Mrs M Bernhuber (MB)**

Add image to background



**7HC- Mr R Feld (RFE)**



**7HM- Miss R Holton (RHL)**



**Mrs J Marston (JMR)**



**7HS- Mr T Ackerman (TA)**



**7HW- Miss E Hall (EH)**



**Miss J Thomas (JT)**

# Year 7 Weekly Plan – more information from Learning Mentors

|               | Monday  | Tuesday                                      | Wednesday                             | Thursday      | Friday                                  |
|---------------|---|--|---------------------------------------|---------------|---|
| <b>Year 7</b> | Assembly led by Senior Leadership Team or Year Lead | Structured Reading Programme<br>Year Council | Structured Reading<br>Student Council | Number Ninjas | Drop Down Friday & Flexi Day Activities |



# Morning Routines in Year 7

Routines are important because they provide structure and consistency, helping to reduce stress, increase productivity, and create a sense of stability in our daily lives.

Roll Call

Top 10

Uniform and dress code

House Point and Behaviour Monitoring

Attendance



**Chosen Hill School**  
**Equipment**

**The Top 10**

- A Blue or Black Pen
- A Rubber
- A Scientific Calculator
- A Ruler
- A Pencil
- A Board Pen
- A Glue Stick
- A Clear Pencil Case

**Your Reading Book**

- A Green Pencil

**It will also be useful to have:**

- A Sharpener
- A Maths Set
- A High Lighter
- Coloured Pencils

# Ready to Learn - Dress Code

- Contributes to ethos and values of the school.
- Parents/ carers are asked to ensure their child follows the dress code at all times
- Including – no trainers, no jewellery, false nails, fake eyelashes
- Students uniform will be checked daily



# Ready to Learn - Disruption Free Learning

We will support all students in reaching our standards, and we are unapologetic about our approach of no-excuses in the school community.



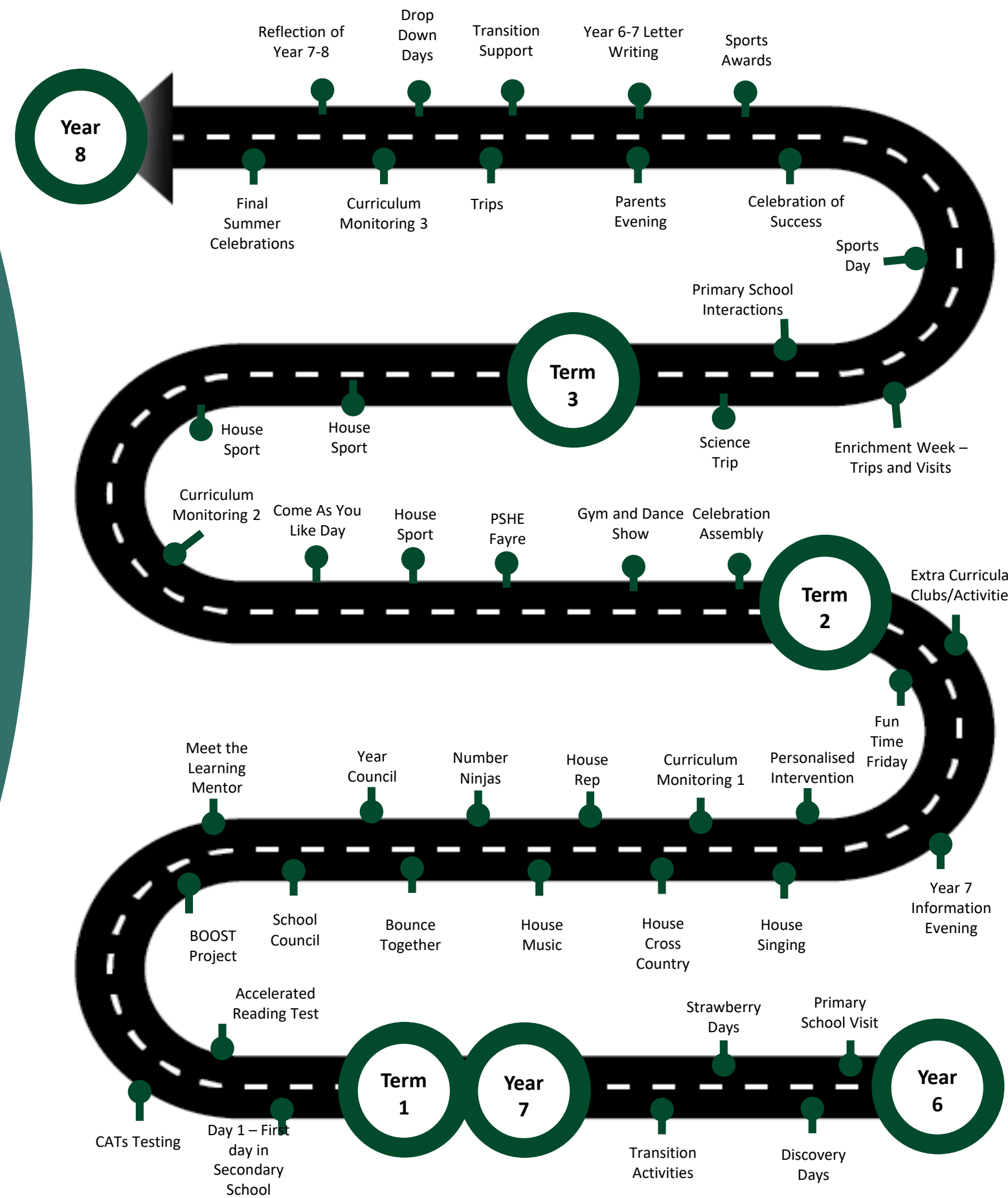
# Ready to Learn – Appropriate use of Technology

- Mobile phones are not to be seen on school site without staff permission. This includes break and lunch times.
- Students are educated about the safe use of online platforms and social media.





# The Year 7 Journey



# Accelerated Reader

## Years 7 to 8

- All students have Accelerated Reading lessons taught by experienced English teachers
- Our students read a book, take an online quiz, and get immediate feedback
- Our students respond to regular feedback and are motivated to make progress with their reading skills
- **How can you help?** Encourage your child at home to spend 20 minutes a day reading their book. A reading book is also a part of our Top



# The Languages Curriculum

- In Year 7 students learn French or Spanish.
- 7CC, 7CM, 7HC and 7HM will study Spanish
- 7HS, 7HW, 7CS and 7CW will study French
- In Year 8 all students will either continue to study their first language and additional English or learn a second language.
- The dual language groupings are based on regular assessment scores.
- In Year 9 students will continue in their groups. All students are encouraged to study a language at GCSE.



# Your child's Progress – 3 times throughout the year with parents evening and Learning Mentor contact

| Subject | Attitude to learning | Attitude to homework | End of Year 8 Target Grade | Progress towards Target Grade | Key area for improvement   |
|---------|----------------------|----------------------|----------------------------|-------------------------------|--|
| English | Exceptional          | Good                 | 5                          | Above expected                | Richard needs to develop his written arguments through using more evidence and quotes from the text.     |
| Maths   | Good                 | Good                 | 6                          | Expected                      | Richard needs to learn how to multiply and divide negative numbers, and should watch Maths Watch Clip 42 |
| History | Satisfactory         | Exceptional          | 5                          | Working towards               |  |
| Biology | Cause for concern    | Cause for concern    | 6                          | Below expected                |  |

This focuses on attitude to learning, rather than just behaviour

These are aspirational grades, but are not a ceiling

There are four categories to indicate progress.

These statements will show what your child must do to progress further.



# Our Offer - Extracurricular

Wide range of extracurricular activities for students to get involved in:

- Sports Clubs - netball, football, hockey, basketball, badminton, dance, table tennis, rugby, fitness.
- Drama Club and Whole School Musical - Dance, acting, singing, backstage support, costume support and set/prop design.
- Library Club
- Homework Club
- House Activities
- Art Clubs
- STEM (Science, Technology, Engineering and Mathematics)
- School Council- year group and whole school council





# PE Clubs

Lunch

Afterschool

Monday

**Boys Basketball -**  
Sportshall



Tuesday

**Senior Rugby Training -** Field  
**Girls Hockey -**  
Sportshall



Wednesday

**Dance -** Girls  
Gym

**Girls Football -** Field



Thursday

**Dance -** Girls Gym

**Y9 Rugby Practice -**  
Field



**Y9 Rugby Skills -**  
Boys Gym



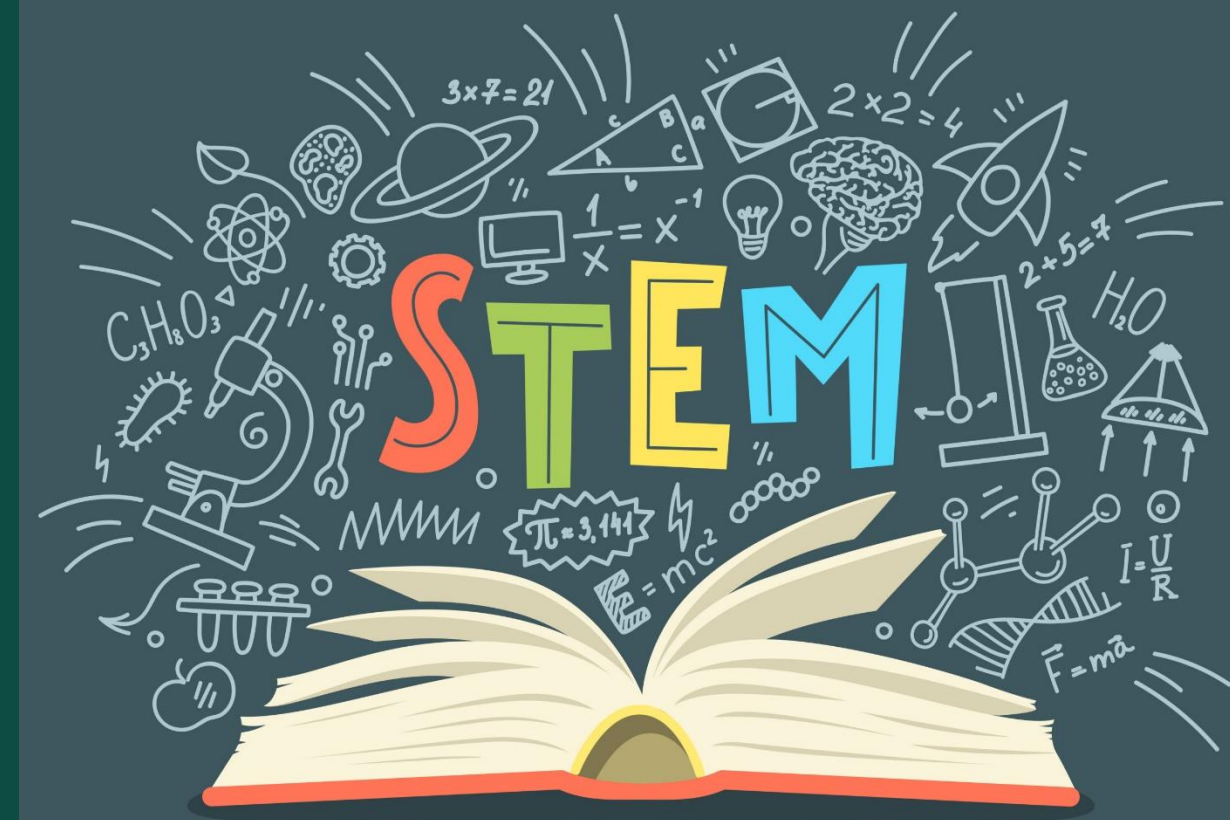
**Y9-11 Netball -** Courts

Friday

**Y9-13 Strength & Conditioning -** Girls  
Gym



**Y7 Boys & Girls Rugby -**  
Field  
**KS3 Badminton -**  
Sportshall



Our 2025 production will be...

## BEAUTY AND THE BEAST

- Auditions for principal roles will take place w/c 16<sup>th</sup> September
- All students will be emailed with the audition material and information
- For KS3, the principal roles available are:
  - Cogsworth
  - Lumière
  - Chip
  - Babette
  - Le Fou
- The show will take place 11<sup>th</sup> – 13<sup>th</sup> February 2025.



# The House System



**Miss Clark**

Masefield  
CM/HM



**Mrs Evans**

Carne  
CC/HC



**Mrs Forster**

Scott  
CS/HS



**Mr Pettifer**

Whittle  
CW/HW

Know your Staff House Leaders

# Our House Heroes and House Teams

- Promote the same values as each house upholds.
- Tolerance, environmentalism, helping others, courage, confidence, kindness, value of education. Nominated and voted for by students



## Sixth Form House Captains 2024 - 2025

| CARNE          | MASEFIELD        | SCOTT           | WHITTLE                |
|----------------|------------------|-----------------|------------------------|
| Kayleigh Locke | Jessica Ashworth | Lily Pooley     | Lewis Chandler-Johnson |
| Roman Wardle   | Aimee Spuffard   | Fletcher May    | Sophie Griffiths       |
| Sophia Bevan   | Amethyst Ludlow  | Callum King     | Hollie Cummins         |
| Jaymee Wood    | Ofelia Bines     | Charlotte Mason | Jaime Amor             |
| Imogen McClean | Daniel Pinnock   | Emily Coombes   | Ben Taylor             |
| Sydney Sutton  | Sam Newman       | Ethan Addis     | Tom Hedeker            |

# Term by Term Plan 2024-2025

1. House Music & House Photography
2. House Bake Off
3. House Gaming
4. House Charities Events & House Science
5. House Chess
6. Sports Day

Along with House Sports throughout the year starting with cross country!



# Our Offer - Graduation

This is a rewards system to celebrate the success of our students.

Students will collect pieces of the Graduation 'pie' throughout the academic year.

They will be awarded a bronze, silver or gold award at the end of the year.



| TOGETHERNESS:<br>Giving back   | TOGETHERNESS:<br>Supporting your house | WELLNESS<br>(Engagement & Belonging)                     | CONFIDENCE<br>(Representing School)                     |
|--|--|--|---|
| Helping with J6 evening (KS3/4)  | House music                            | School Sports practice                                   | Evening event with parents or public watching           |
| Helping with Strawberry Day  | Sports day                             | School Music rehearsal                                   | Representing school at district, or higher, level event |
| Language Readers   | house week activities                  | Fame lab   | Fame lab final  |
| Volunteering to litter pick in the community                               |  | Drama rehearsal  |   |
| Helping your teacher do something substantial (ie taking at least an hour) |  | Sports team competition external to school               |   |
| Helping a neighbour do a big task and telling your tutor                   |  | Being in cadets/scouts/guides/army cadets (min 6 months) |   |
| Buddying up with a lower year  |  | Uniform on for Remembrance                               |   |
| Helping run a club for lower years (min 6 weeks)                           |  | Passing a music/dance grade                              |   |
| School newspaper   |  | Dance or music classes (min 6 months)                    |   |
|  |  | Weekend away with DofE                                   |   |

# Our Offer - Graduation

| Ambition                 | Honest (& Integrity) |
|--------------------------|----------------------|
| A2L<br>A2H<br>Attendance | Conduct              |



| TOGETHERNESS:<br>Giving back  | WELLNESS<br>(Engagement & Belonging)   | TOGETHERNESS:<br>Supporting your house             | CONFIDENCE<br>(Representing School)   |
|---|--|--|---|
| TA/mentoring of younger students (outside of timetabled TA sessions)<br>Boost Project | MedChem*<br>Critical Thinking*<br>Period 6 study group*<br>Additional work experience<br>Additional qualification (e.g. Future Learn course)<br>Academic Competition | house music<br>sports day<br>house week activities | Evening event with parents or public watching<br>Representing school at district, or higher, level event<br>Fame lab final<br>Sixth Form Choir (public performance)<br>Academic Competition (Final) |

# Our Offer - Wellbeing and Safeguarding



Senior Mental Health Lead and DSL - Mrs K Chodera (Assistant Head): [kch](#)



Wellbeing Support Lead - Ms M Cartwright: [mca](#)



School Counsellor - Mrs C Kelly: [ckl](#)



Whole school Wellbeing Curriculum Lead - Mrs E Hall: [eh](#)



Educational Welfare Officer and ADSL - Mrs H Davies: [hdv](#)



Student and Families Welfare Officer and ADSL - Miss H Norman: [hn](#)

Deputy Designated Safeguarding Lead - Mrs A Wright: [awr](#)



[Safeguarding@chosen-hill.gloucs.sch.uk](mailto:Safeguarding@chosen-hill.gloucs.sch.uk)



# Our Offer - Wellbeing Support

- Wellbeing, Relationship and Social Education (**WRSE**) timetabled lessons for all students.
- Wellbeing feedback for students and parent/carers. Accredited surveys through **Bounce-Together**.
- Self-Referral for all Chosen Hill Students. Tell us what is worrying you and ask for some support.
- **School Mental Health Referral Form (SMHRF)**.
- Weekly triage meeting of The Senior Mental Health Lead, the School Counsellor, and the Well-being support Lead.
- Appropriate support either in school or referral to additional external specialists.
- With agreement from the student, communication with parents/carers.

# Key Apps and Information

A photograph of a computer lab. In the foreground, several students are seated at desks, each with a computer monitor. They appear to be looking towards the front of the room. In the background, a teacher is standing near a whiteboard, possibly presenting. The room is well-lit with overhead fluorescent lights. A large teal circular graphic is overlaid on the left side of the image, containing the text 'Key Apps and Information'.

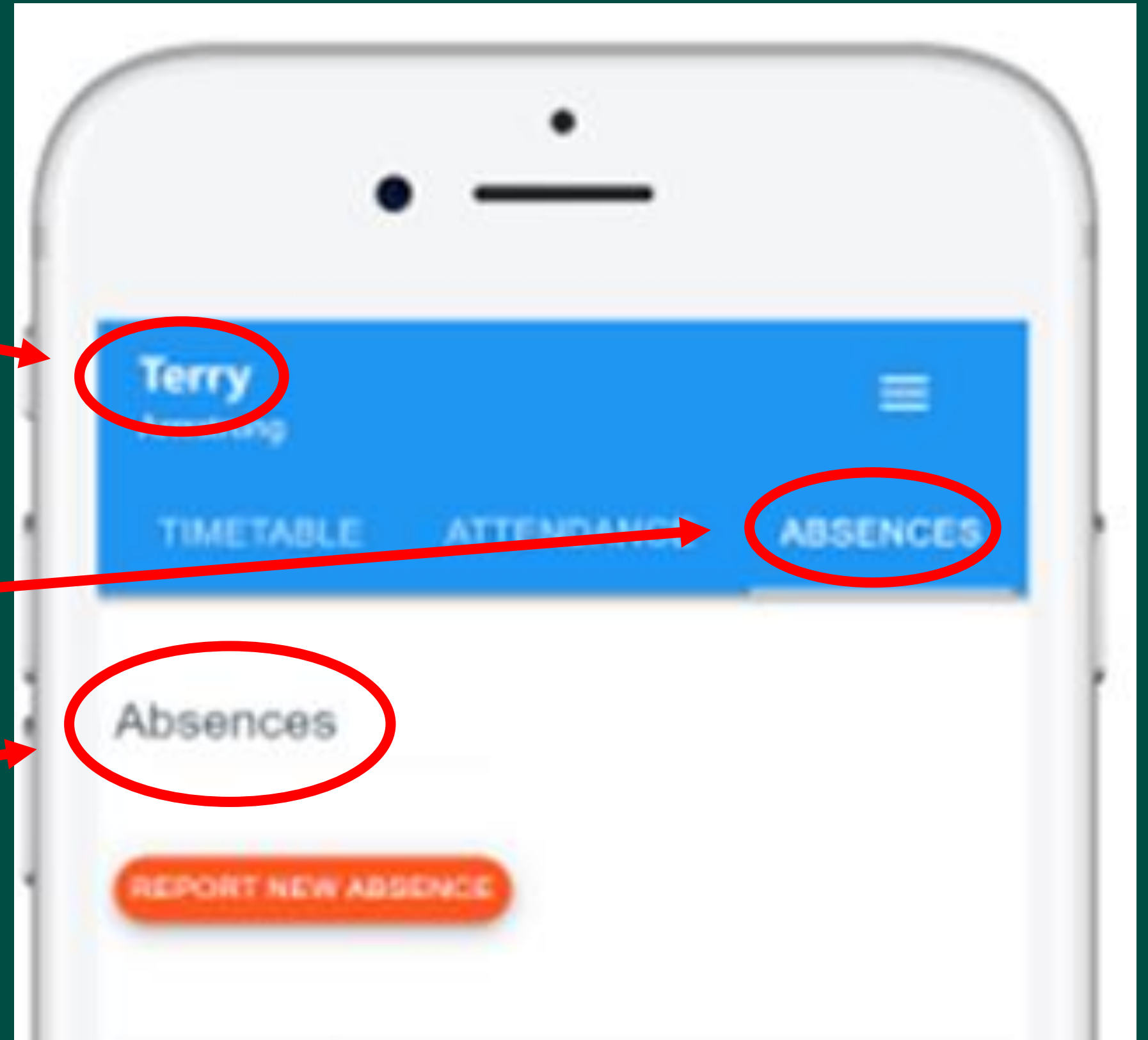
# Attendance, Behaviour and Homework

- You will be able to see your child's attendance, homework and behaviour information.
- You have been sent a parental login and information through your child
- Learning Mentors also have a list of logins if you have missed this information

The image is a screenshot of the ClassCharts login interface. At the top, the text 'Log in' is displayed. Below this, there are three tabs: 'Teacher', 'Parent', and 'Student'. The 'Parent' and 'Student' tabs are highlighted with red circles. Underneath the tabs is a password input field containing a masked password '\*\*\*\*\*' and a small icon of a crossed-out eye. Below the password field is a checked checkbox labeled 'Remember me'. To the right of the checkbox is an orange button labeled 'Log in'. At the bottom of the page, there is a note: 'To log in and view your report you will need to enter the code provided to you by your teacher.'

# Reporting Student Absence

1. Select the child you are reporting for.
2. Click the absence tab.
3. Click report a new absence.



# Communication - The School Gateway

- The School Gateway enables you to pay for dinner money and trips and activities via a debit or credit card. We are a cashless school.
- A system that we use to communicate with you via text, email or the school gateway app.
- You are able to see your child's timetable and reports and access the school website and update your contact details.
- Your login details will be the same details you used when you registered your child at Chosen Hill School
- Any issues please email [dwr@chosen-hill.gloucs.sch.uk](mailto:dwr@chosen-hill.gloucs.sch.uk)

The logo for Schoolgateway, featuring the word "Schoolgateway" in a blue, sans-serif font on a white background.

175 non-term days  
for holidays and appointments

0 days  
absence

SCHOOL DAYS  
IN EACH YEAR

190

100%

attendance

10 days  
absence

DAYS IN  
SCHOOL

180

95%

attendance

19 days  
absence

DAYS IN  
SCHOOL

171

90%

attendance

29 days  
absence

DAYS IN  
SCHOOL

161

85%

attendance

38 days  
absence

DAYS IN  
SCHOOL

152

80%

attendance

47 days  
absence

DAYS IN  
SCHOOL

143

75%

attendance

School Target is 96% or 182 days.

*WELL DONE*

*WE ARE WORRIED*

Serious Impact on education and  
future opportunities

*WE ARE SERIOUSLY CONCERNED*

# Good punctuality to school means:

- You arrive to school and every lesson on time.
- You are developing key work place skills.
- Not impacting on the learning of others.
- Not reducing learning time for other students.

Average learning time per day: **5 HOURS**.

If you are 15 minutes late each day, you will have missed **2 FULL WEEKS** at school in one year.



# The Parent Bulletin

- Posted every Friday afternoon.
- Key information and links that support both parents and students.



Parent Bulletin, Friday 28th June 2024



# Communication via Learning Mentor or Year Lead

- **Effective communication requires mutual respect, politeness, empathy and sometimes patience**
  - **I will always communicate with parents on any issue**
- **Please can we remind you that we will deal with issues that may arise in school in the best way that we can**
- **Sometimes this can take some time but we will always look into and resolve what we can**
- **If you require a meeting with a member of staff please email that staff member or call reception so that an appointment can be made**